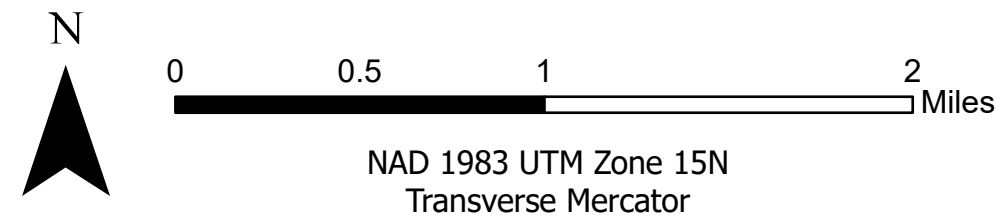
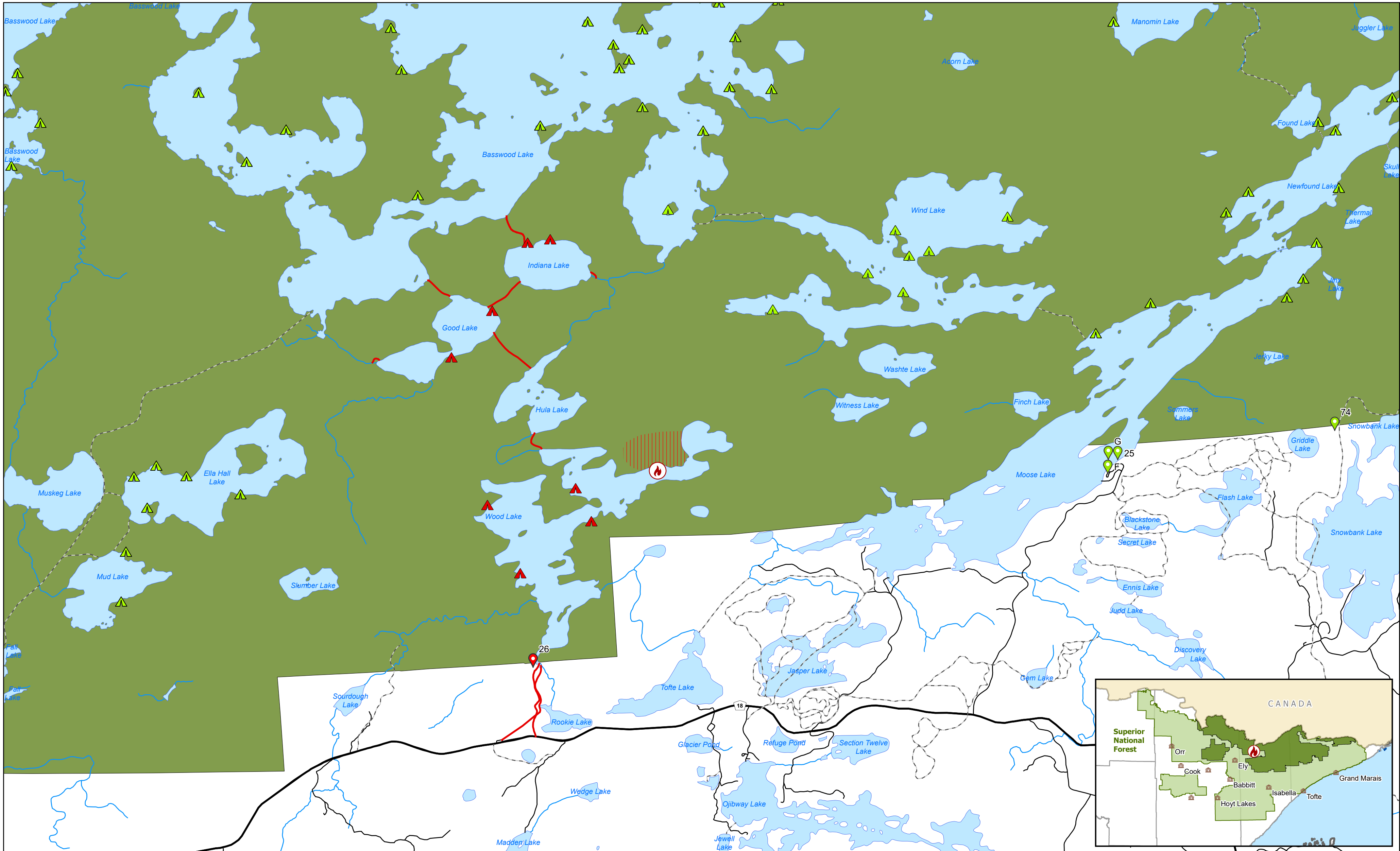


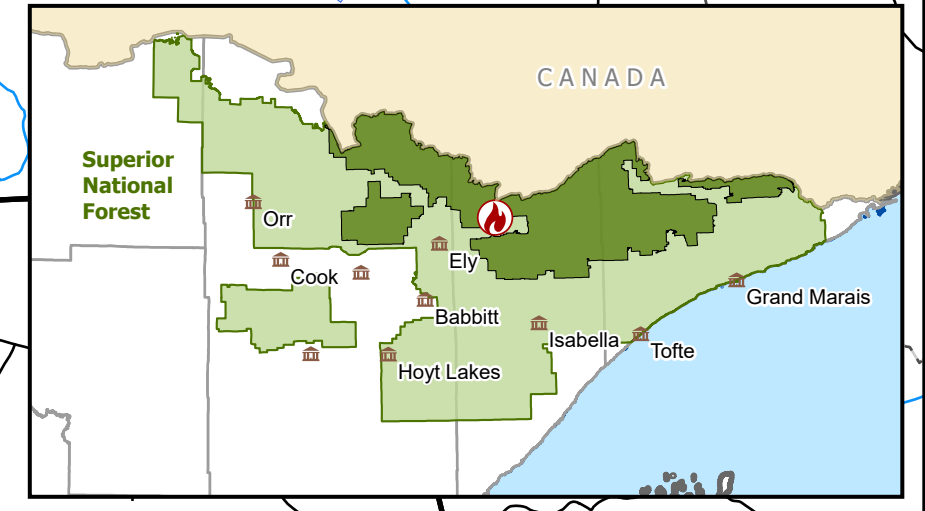


Wood Lake Fire Closures, FS Order #09-09-24-07, Exhibit B

Eastern Region | Superior National Forest



- Initial Fire Point
- Open BWCAW Entry Points
- Open BWCAW Campsite
- Trail/Portage
- BWCAW Boundary
- Closed BWCAW Entry Points
- Closed BWCAW Campsite
- Portage/Trail Closures
- General Fire Area
- Existing Road
- National Forest Boundary
- Portages



*This product is reproduced from geospatial information prepared by the USDA Forest Service. Geospatial information and GIS product accuracy may vary. Using GIS products for purposes other than those for which they were created may yield inaccurate or misleading results. USDA Forest Service reserves the right to correct, update, modify or replace GIS products without notification*